



dddrop

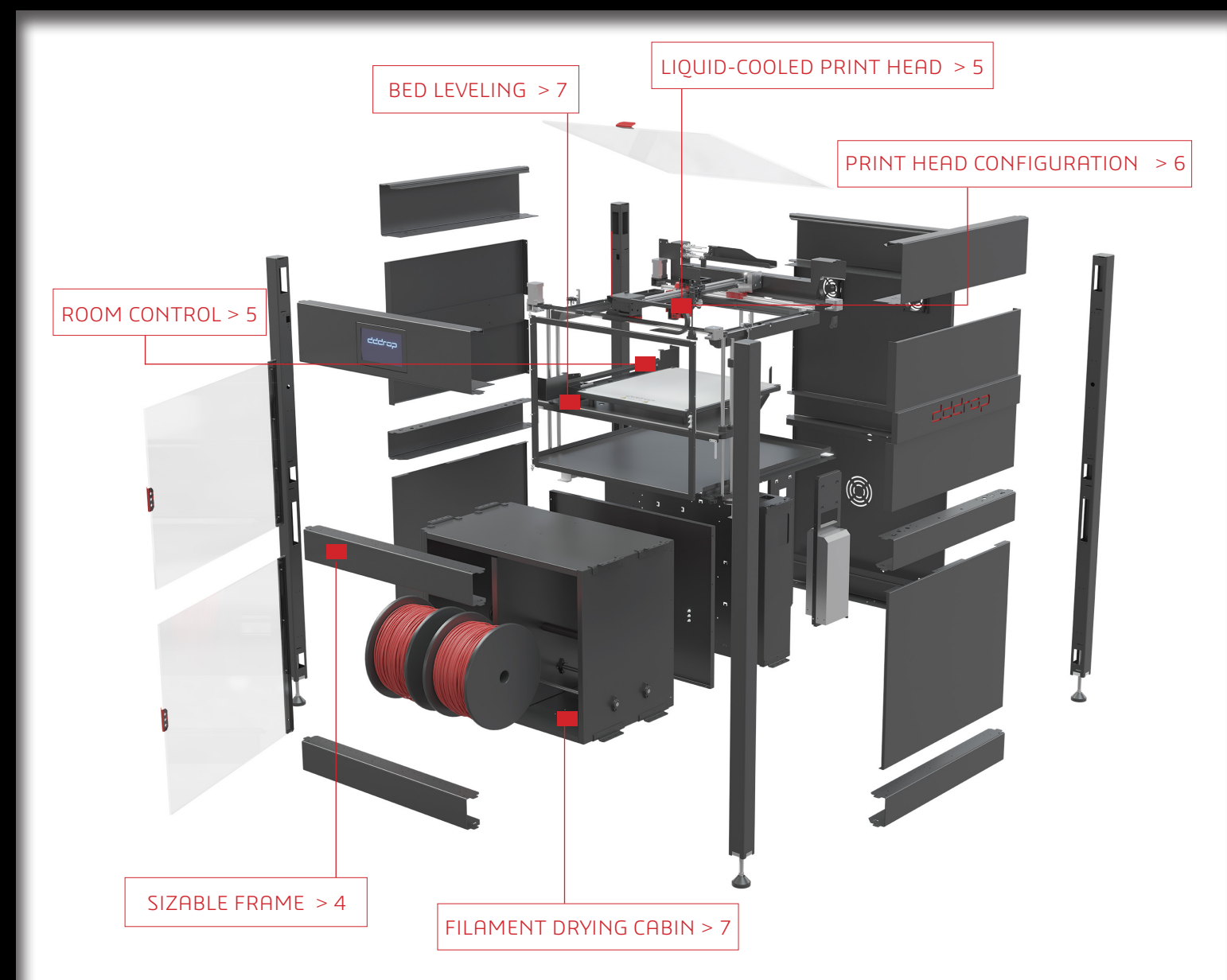
RAPID ONE

CONFIGURATE YOUR 3D-PRINTER

Let your creativity run free

Every user has different demands and needs, so dddrop presents a scalable 3D printer; the dddrop RAPID ONE. You choose the dimensions of the build volume you need and decide which functions are most important for your application, and we will build it

Page	4	SIZABLE FRAME
	5	ROOM CONTROL
	5	LIQUID-COOLED PRINT HEAD
	6	PRINT HEAD CONFIGURATION
	7	BED LEVELING
	7	FILAMENT DRYING CABIN
	8	MATERIALS
	9	TECHNICAL SPECIFICATIONS
	10	DDDROP TEAM
	12	CONTACT INFORMATION





SIZABLE FRAME

Choose the print build volume you need

What differentiates the dddrop RAPID ONE from other 3D printers is its sizable frame. You can determine the dimensions of the build volume, assuming a minimum size of 300 x 300 x 300 mm, scalable in X - Y and Z directions.



ROOM CONTROL

Creating the optimum printing environment

The RAPID ONE has a closed print room, with fans in the rear wall. You can choose whether you want a HEPA-filter added as well. The print room can turn into a heated chamber in various ways. Ask for the possibilities.



LIQUID COOLED

For the optimal print result

Temperature control plays an important role in the print head as well. By means of a regulated liquid-cooling system, the print head temperature can be adjusted accurately. This will result in high-quality 3D prints.



PRINT HEAD CONFIGURATION

Attach the printhead that is suitable for your needs

Each print material requires a different print configuration to achieve the perfect 3D print. Our 3D printer specialists will advise you on putting together the right configuration for you. We take into account:



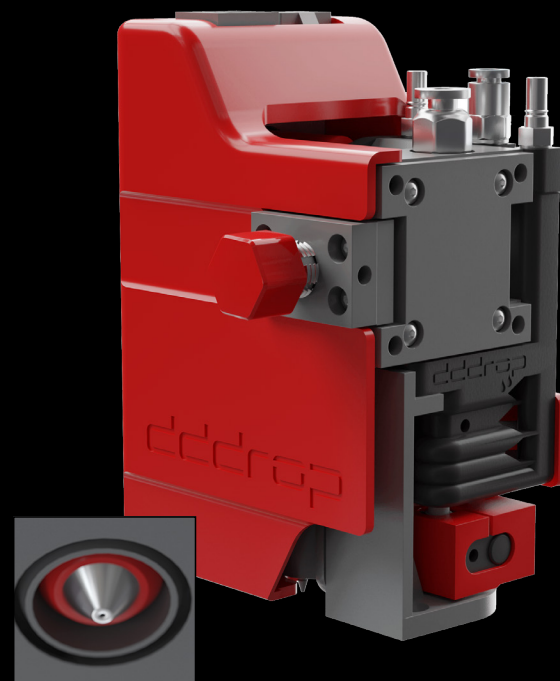
1. Strength of heating element

2. Materials of nozzles

- Brass
- Hardened steel
- Tungsten carbide

3. Diameter of nozzles

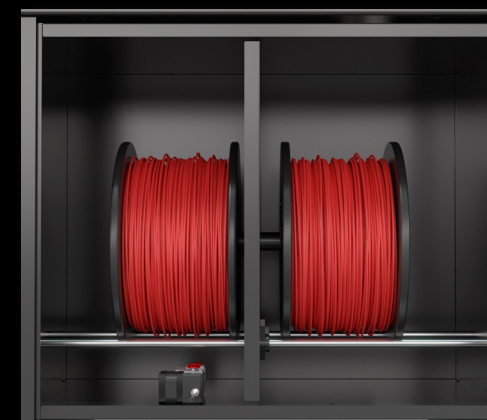
0.2 - 0.4 - 0.6 - 0.8 - 1.0 mm



BED LEVELING

For the perfect first layer

Leveling the print bed has never been this uncomplicated. The RAPID ONE print head is equipped with a leveling sensor, which automatically adjusts the distance between print head and print bed. A perfect first print layer guaranteed.



FILAMENT DRYING CABIN

The ideal environment for filaments

To achieve a perfect print you need to store the filaments rolls in a suitable environment. Filaments absorb moisture, which reduces print quality. An integrated drying room becomes the right environment to store the filaments.

MATERIALS

Select the desired material

Thanks to the printhead(s) being configured according to your need, the dddrop RAPID ONE is suitable for 3D printing with many different materials, such as:

- PLA
- PET-G
- ABS
- PP
- PC
- PA
- Flexible materials
- Fiber-filled materials (such as carbon fiber or fiber glass)



Filament rolls

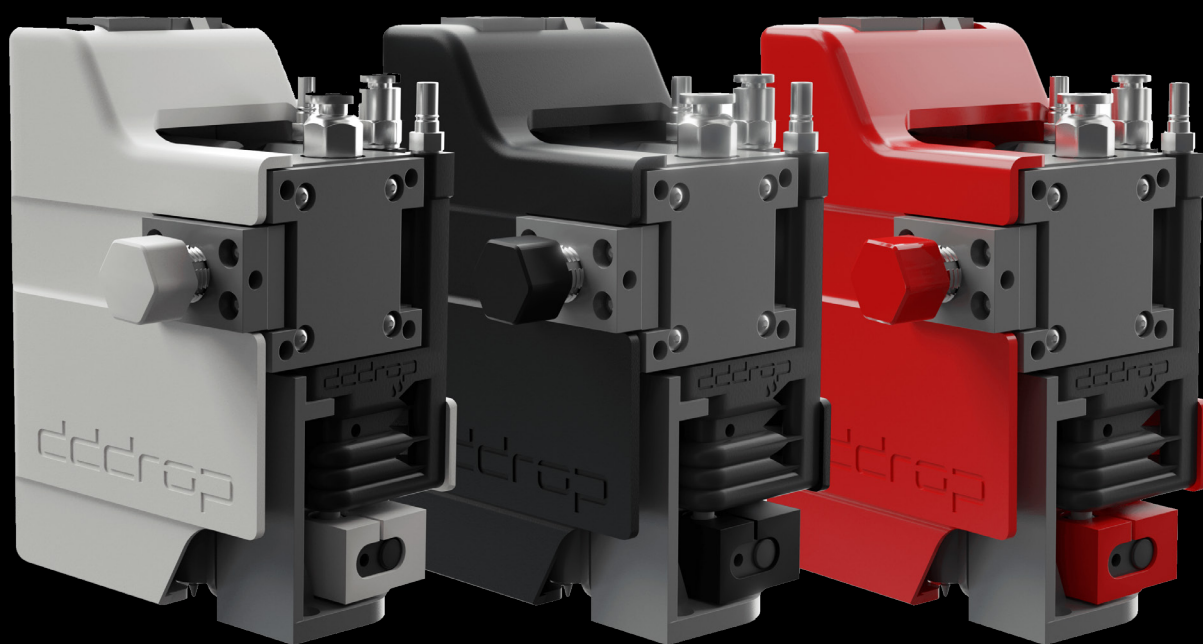
The integrated base cabinet is optimally designed to store reels of different diameter that can be used in the print process. From 0.5 kg to 8.5 kg, the choice is yours.

Do you want to print with other materials or quantities?
Ask for the possibilities.

TECHNICAL SPECIFICATIONS

Choose your own configuration

Production method	Made to order. Tailored to your needs.
Delivery time	< 1 month after order confirmation
Sizable Frame	min. 300 x 300 x 300 mm Sizable in X - Y and Z direction
Print head (<i>Configure yourself</i>)	Easily interchangeable Liquid cooled Active 3D print cooling Bed leveling sensor
Print head configuration	0.2 mm - 0.4 mm - 0.6 mm - 0.8 mm - 1.0 mm
Print bed	Easily interchangeable Heated 3-point bed leveling
Print room	Closed print room HEPA filter Temperture controlled environment
Integrated base cabinet	Filament dryer
Filament	Diameter 1.75 mm PLA, PET-G, ABS, PP, PC, PA, flexible & fiber filled
User interface	7 inch touchscreen
Slicing	Autoslicing & Simplify3D



DDDROP

Logistiekweg 34
7007 CJ DOETINCHEM
0314 377 050
info@dddrop.com
www.ddddrop.com

MORE INFORMATION

launch.dddrop.com